



20  24



WEEK 08

GOVERNMENT OF SIERRA LEONE
MINISTRY OF HEALTH
NATIONAL PUBLIC HEALTH AGENCY

NATIONAL WEEKLY EPIDEMIOLOGICAL BULLETIN

WEEK 08: 19th — 25th Feb, 2024



KEY SURVEILLANCE PRIORITY DISEASE AND 117 CALL CENTRE HIGHLIGHTS FOR THE WEEK

Disease specific report Highlights

- **Measles:** Five (5) cases of suspected measles were reported this week. All of the cases were above five years of age from Port Loko (3), Karene and Pujehun(1) each per district. The cases were investigated and samples sent to CPHRL for confirmation
- **Animal Bite (Dog):** Nineteen (19) Dog bite cases were reported this week. All of the cases were above five years of age. The highest number of cases were from Kono (7), Bombali (4), Kailahun (3) districts
- **Animal Bite (Snake):** Five (5) Snake bite cases were reported this week. All of the cases were above five years. The cases were from Bombali, Kailahun, Port Loko, Pujehun and Tonkolili (1) each per district
- **Maternal death:** Eleven (11) maternal deaths were reported from seven districts this week. The deaths were reported from Pujehun (3), Tonkolili and WAU (2) while Bombali, Kailahun, Kenema and Moyamba (1) each per district
- **Yellow Fever:** One (1) suspected case of Yellow Fever was reported this week from WAU aged above five years. The case was investigated and sample sent to CPHRL for confirmation
- **Acute Viral Hemorrhagic Fever (AVHF):** Eleven (11) cases of suspected AVHF with one death was reported this week. The death was from Kenema. Of the cases two were under five and nine were above five years from Kenema (9), Tonkolili and WAU (1) each per district. The cases were investigated and samples sent to CPHRL for confirmation and all tested negative for AVHF.

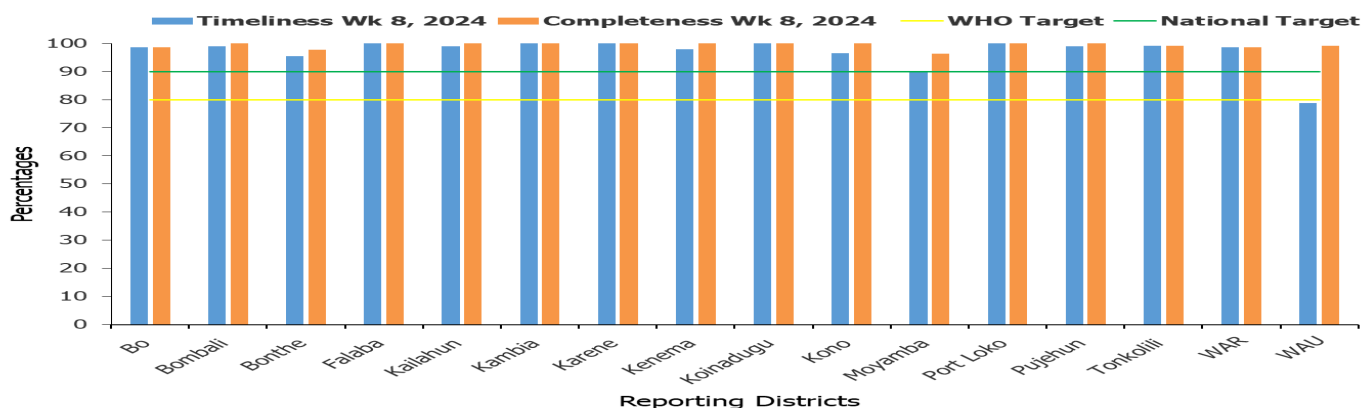
117 Call Centre Highlights

- **Pneumonia:** Four (4) calls related to suspected pneumonia were made this week from three districts
- **Maternal death:** One (1) calls related to maternal death was made this week from Moyamba district
- **Bloody diarrhoea:** One (1) call related to bloody diarrhoea was made this week from Kailahun district
- **Measles:** One (1) call related to Measles was made this week from WAU district

Call Summary for epi week 8, 2024

- A total of 8,014 calls were received and responded to, out of which 7,902 (98.6%) were prank calls and 112 (1.4%) were signals
- Out of the total signals received:
 - Death 92 (82.1%)
 - Health Emergencies 4 (3.6%): Dog Bite 2 & Snake Bite 2
 - Sick 9 (8.0%)
 - Health Information 6 (5.4%): COVID-19 inquiries 5
 - Referral Call 1 (0.9%): ONS

Health Facility Timeliness & Completeness of Weekly report by district, (epi week 8, 2024)

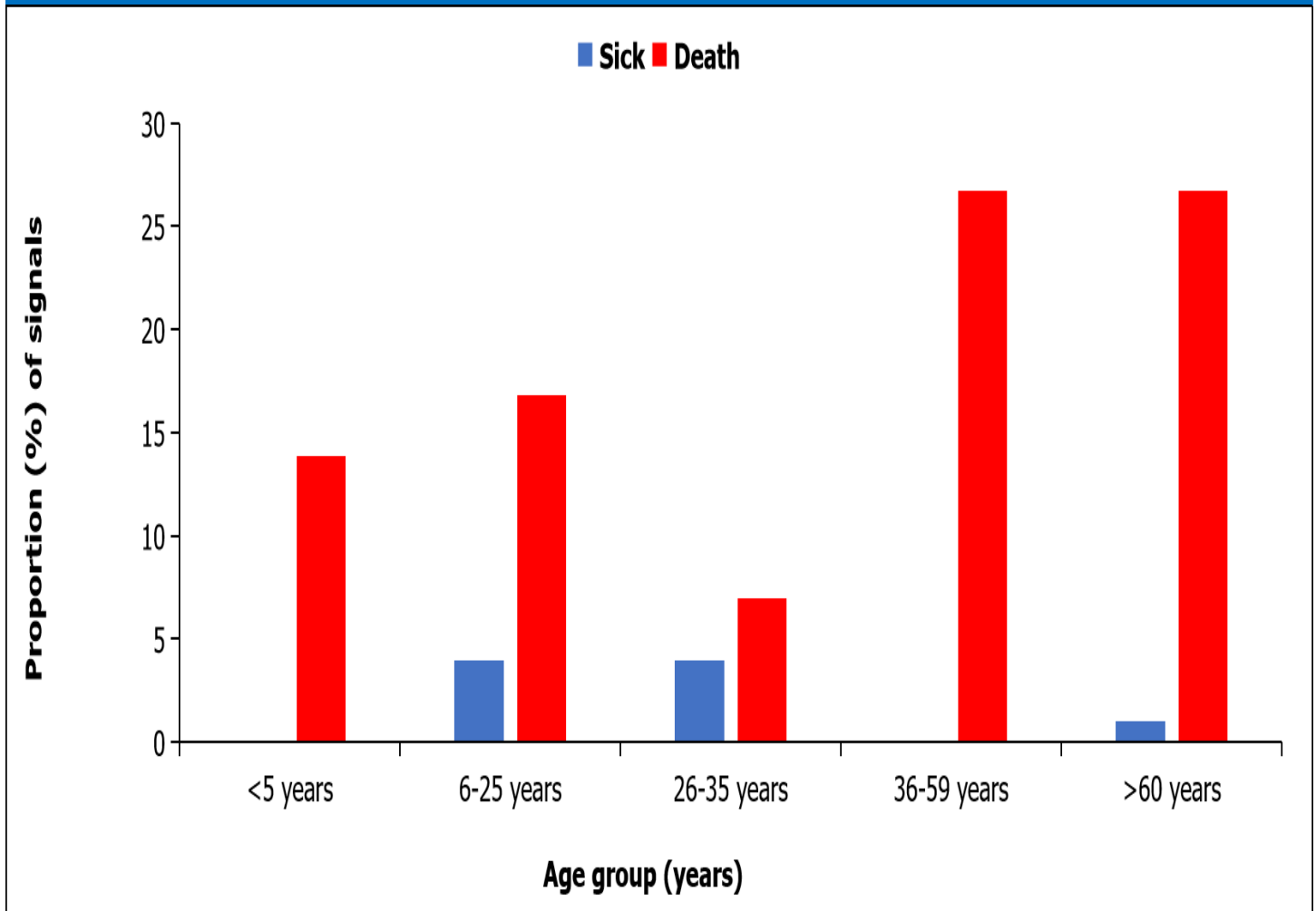


For Week 8 of 2024, 15 out of 16 districts achieved both the WHO and national targets for completeness while one could not achieve both the WHO and national targets timeliness

Updates from the samples of suspected cases reported for week 8

- **Acute Viral Haemorrhagic Fever (AVHF):** Eleven Samples of suspected AVHF were sent to the Lab. this week. The samples were collected and sent to Kenema regional Lab. All of the samples however tested Negative AVHFs
- **Measles:** Five samples of suspected measles were sent to the Lab. From Port Loko, Karene and Pujehun districts. The turn around time for measles sample is seven days
- **Yellow fever:** One sample of suspected yellow fever was sent to the Lab. For confirmation. The TAT for yellow fever is seven days

Sick and death signals by age groups, epi week 8, 2024 (n=9) (n=92)



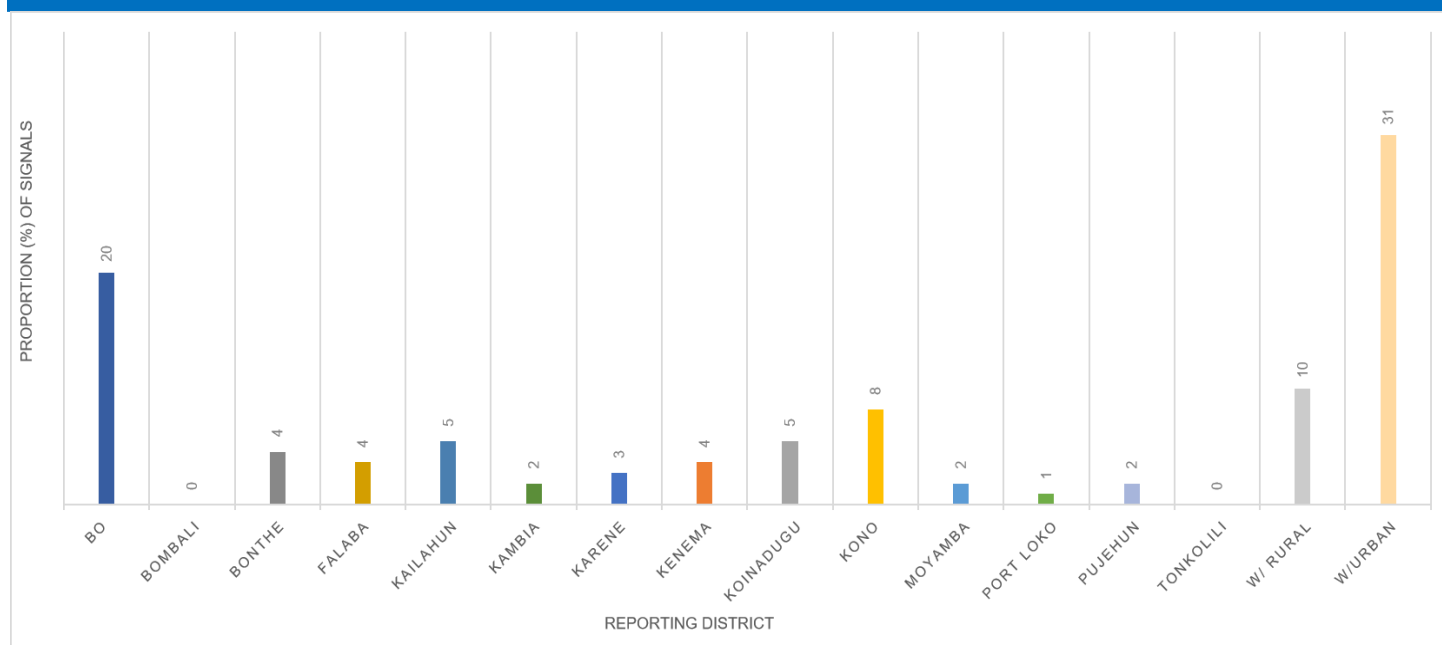
For week eight of 2024, a total of 101 call signals for sick and death were made of which 92 were related to deaths and 9 were for sick. The age groups of < 36-59 and that of >60 had a higher proportion of death reported and the least was 26-35years. For the sick cases the age group of 6-25 and 26-35 reported the highest

Submission of report by health facility via phone call, SMS, paper form or Mobile internet (epi week 8, 2024)

District	#s of Expected HFs	Call	Paper forms	SMS	Mobile SMS	Mobile internet	Mobile Total	Total Submission	% Mobile Submission
Bo	150	2	0	113	18	16	34	149	23
Bombali	97	0	0	9	20	68	88	97	91
Bonthe	89	2	0	14	12	59	71	87	82
Falaba	50	24	0	0	7	19	26	50	52
Kailahun	91	0	0	0	6	85	91	91	100
Kambia	74	0	0	0	12	62	74	74	100
Karene	62	0	0	10	10	42	52	62	84
Kenema	141	0	0	70	39	32	71	141	50
Koinadugu	67	0	0	54	4	9	13	67	19
Kono	114	0	0	81	15	17	32	113	28
Moyamba	110	80	0	0	21	5	26	106	25
Port Loko	118	0	0	0	57	61	118	118	100
Pujehun	104	0	0	1	14	89	103	104	99
Tonkolili	117	49	0	0	38	29	67	116	58
WAR	72	9	23	0	26	14	40	72	56
WAU	108	0	0	0	41	66	107	107	100
Cumulative	1564	166	23	352	340	673	1013	1554	65
KEY:		90 - 100		75 - 89		0 - 74			

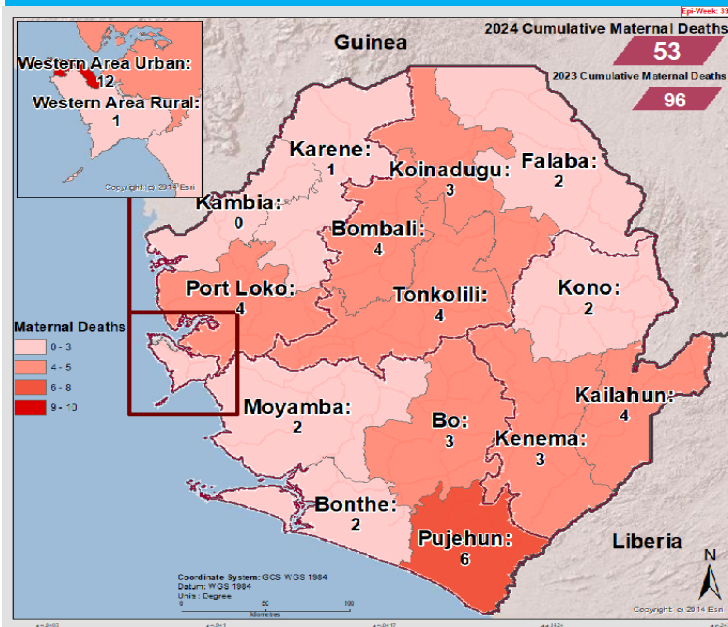
For week eight of 2024, a total of 1,564 facilities reported countrywide using various means of reporting. Mobile SMS and mobile internet were used exclusively by four districts (Kailahun, Kambia, WAU and Port Loko). Only one district (WAR) used paper based reporting of which, 23/72 (32%) of the facilities reported using paper. The country has moved from paper based reporting

Call signals by reporting districts epi week 8, 2024 (N=112)



For week eight of 2024, greater proportion of call signals were from WAU district closely followed by Bo district, then WAR district. 2/16 (12.5%) of districts made zero call.

Cumulative Maternal Deaths reported by district (epi Week 8, 2024)



Compared Maternal Deaths reported by district (epi Week 1- 8, 2023 & 2024)

District	2023 Week 1 - 8	2024 Week 1 - 8	
Bo	18	3	↓
Bombali	3	4	↑
Bonthe	7	2	↓
Falaba	3	2	↓
Kailahun	4	4	↔
Kambia	7	0	↓
Karene	3	1	↓
Kenema	4	3	↓
Koinadugu	0	3	↑
Kono	8	2	↓
Moyamba	3	2	↓
Port Loko	3	4	↑
Pujehun	4	6	↑
Tonkolili	9	4	↓
Western Rural	3	1	↓
Western Urban	17	12	↓
Total	96	53	

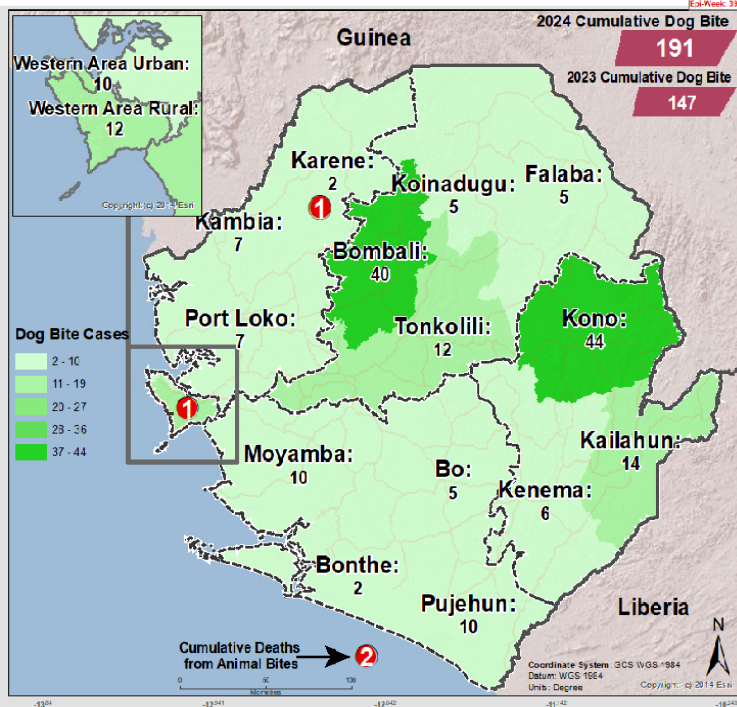
In comparison with week seven of 2023, 2024 has reported less maternal deaths for the same period. Eleven deaths were reported this week from seven districts. One district (Kambia) has not reported any maternal death in the past eight weeks. Total mater-

Maternal Deaths reported by district and Place of Occurrence (epi Week 8, 2024)

District	Health Facility	No. of Death
WAU	PCM. Hospital	2
Bombali	Kanikay MCHP	1
Kenema	MSF Hospital	1
Moyamba	Belentin CHP	1
Kailahun	Kailahun Gov. Hospital	1
Pujehun	Pujehun Gov. Hospital	2
	Zimmy CHC	1
Tonkolili	Magburaka Gov. Hospital	1
	Rochen Malal CHP	1
Total		11

In week eight of 2024, a total of eleven maternal deaths were reported from seven districts. Seven of the maternal deaths were from hospitals and four were from PHUs

Cumulative Dog Bite cases reported by district (epi Week 8, 2024)

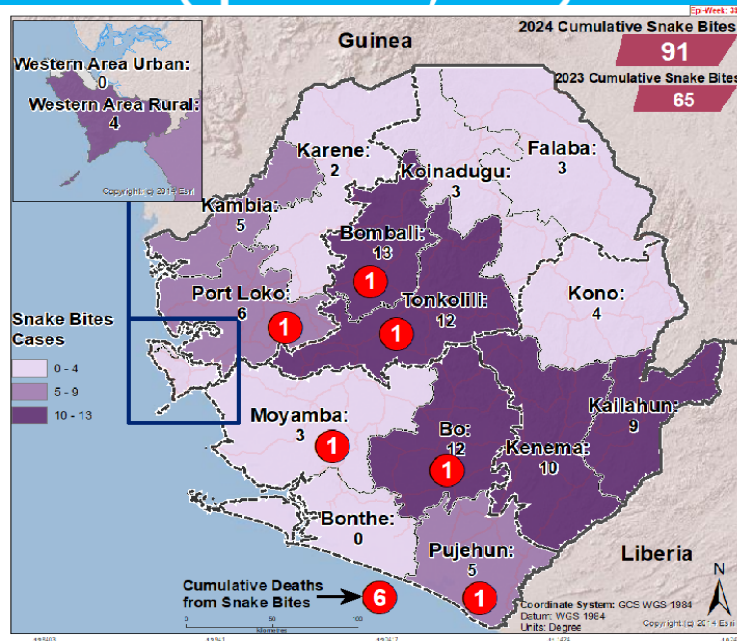


Compared Dog Bite cases reported by district (epi Week 1- 8, 2023 & 2024)

District	2023 Week 1 - 8	2024 Week 1 - 8	
Bo	0	5	↑
Bombali	22	40	↑
Bonthe	1	2	↑
Falaba	5	5	→
Kailahun	17	14	↓
Kambia	4	7	↑
Karene	4	2	↓
Kenema	8	6	↓
Koinadugu	2	5	↑
Kono	36	44	↑
Moyamba	6	10	↑
Port Loko	19	7	↓
Pujehun	9	10	↑
Tonkolili	0	12	↑
Western Rural	6	12	↑
Western Urban	8	10	↑
Total	147	191	↑

Week eight of 2024 has reported more dog bite cases including two deaths related to dog bite compared to 2023 same period. The highest number of cases were reported from Kono, Bombali, Kailahun and Tonkolili districts and the deaths were from WAR and Karene districts. Total reported cases since the start of the year is 191.

Cumulative Snake Bite cases reported by district (epi Week 8, 2024)



Compared Snake Bite cases reported by district (epi Week 1- 8, 2023 & 2024)

District	2023 Week 1 - 8	2024 Week 1 - 8	
Bo	2	12	↑
Bombali	11	13	↑
Bonthe	0	0	→
Falaba	3	3	→
Kailahun	5	9	↑
Kambia	3	5	↑
Karene	4	2	↓
Kenema	6	10	↑
Koinadugu	5	3	↓
Kono	10	4	↓
Moyamba	1	3	↑
Port Loko	8	6	↓
Pujehun	6	5	↓
Tonkolili	0	12	↑
Western Rural	1	4	↑
Western Urban	0	0	→
Total	65	91	↑

Week eight of 2024 reported more snake bite cases compared to week eight of 2023 and with five deaths related to snake bite. The deaths are from Pujehun, Port Loko, Bo, Tonkolili and Bombali districts. The highest number of cases were reported from Bombali, Tonkolili, Bo, and Kenema districts. Total reported cases since the start of the year is ninety-one (91).

NATIONAL WEEKLY EPIDEMIOLOGICAL BULLETIN PRODUCTION TEAM



Editor: Charles Keimbe



Publisher: Mr. Harold Thomas



Data Analyst: Mr. Samba Kamara